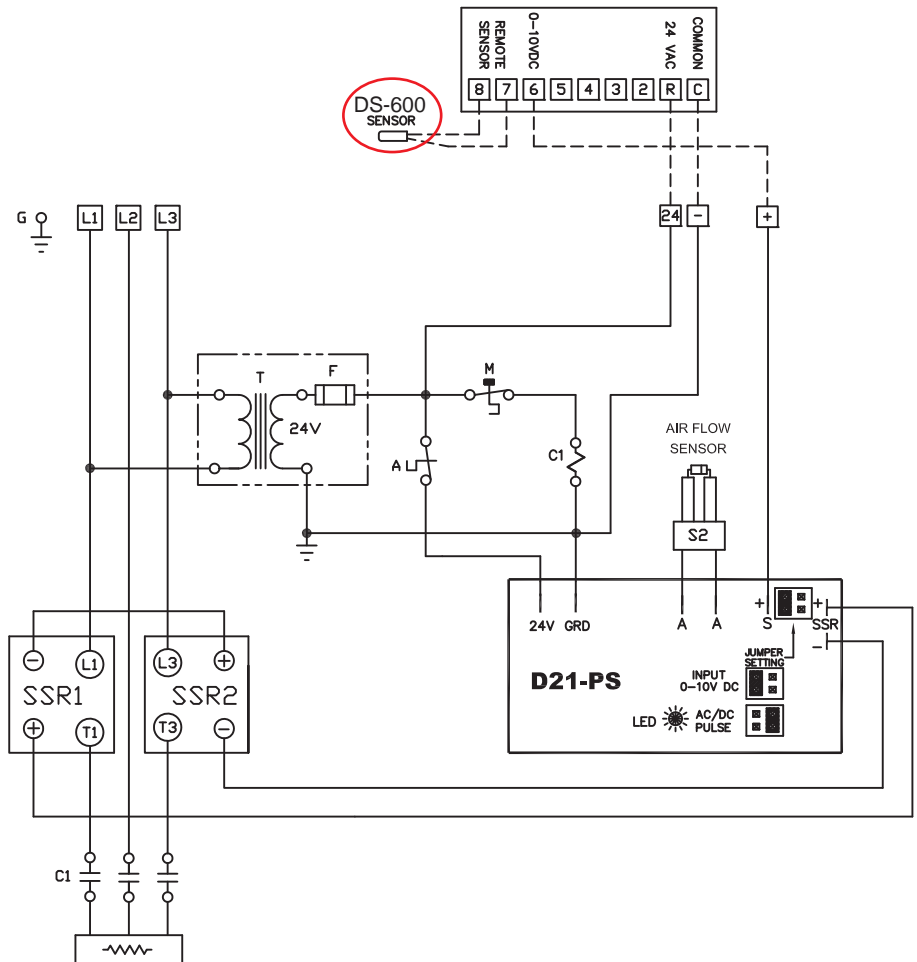




The **DS-600** is a thermistor based duct sensor designed to work with Thermolec's thermostats and electronic controllers to modulate the heater's capacity according to the heat required. In most cases the DS-600 is used with Thermolec's 0-10 VDC Room Thermostat to allow it to function as a duct stat. It can also be used as a remote duct sensor with our 'T' versions of controllers such as D21-T, D22-T and D21-TS when connected to the 'S S' terminals.

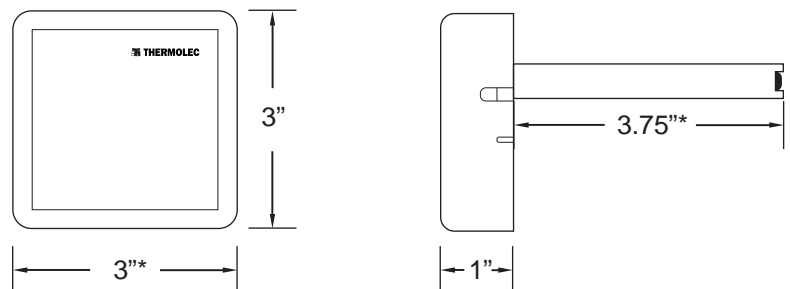
TYPICAL WIRING DIAGRAM:



FEATURES:

- Low Voltage
- Thermistor sensor
- White ABS housing
- 2 wire connection

DIMENSIONS:



* dimensions are approximate and may change without notice