

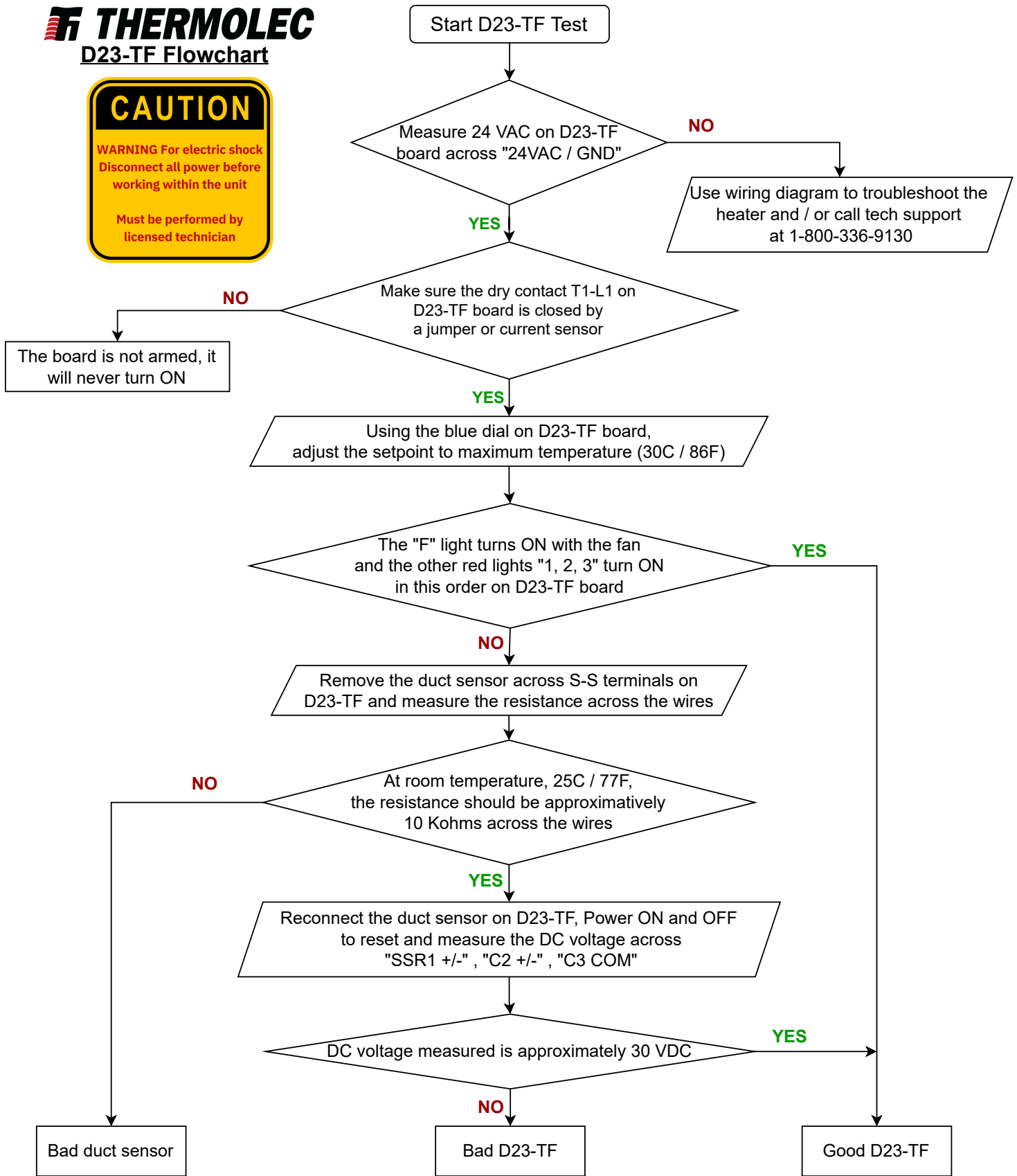
THERMOLEC

D23-TF Flowchart

CAUTION

WARNING For electric shock
Disconnect all power before
working within the unit

Must be performed by
licensed technician



NOTE : If the duct air temperature falls below than 5C / 41F or over 40C / 104F, the board D23-TF will turn OFF after one minute. The "W" light will start flashing once if the duct temperature is too low and twice if it is too high

NOTE: Please put back connections and jumpers as per wiring diagram