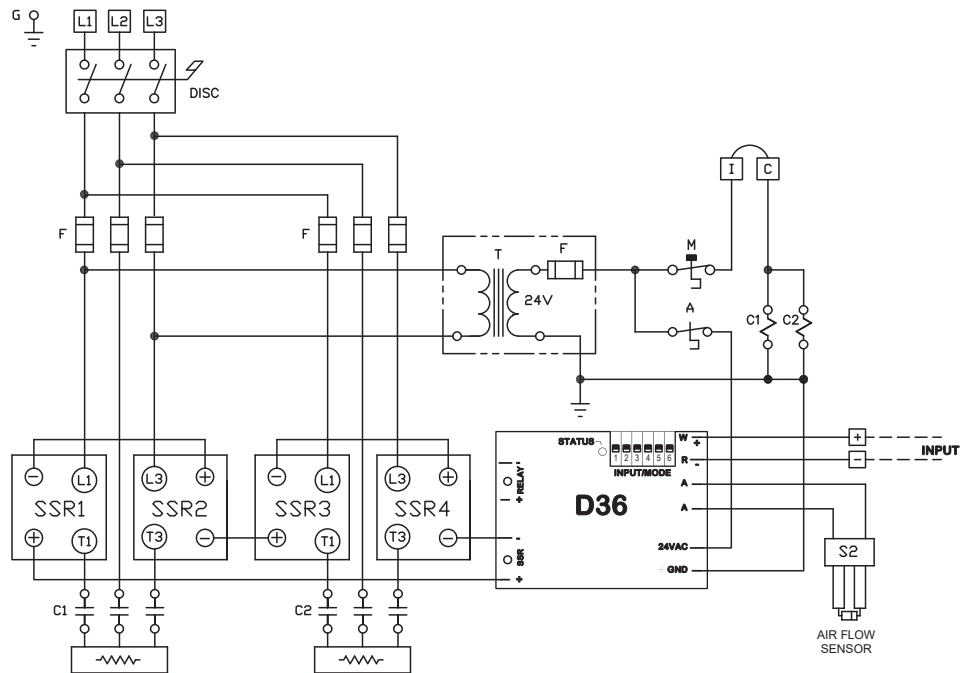




The **D36** pre-calibrated electronic controller is the evolution of Thermolec's most flexible controller with four different input options on a single board. Input signals supported include a thermistor setting for Thermolec's RT/ DT or RADS thermostats, 4-20 mA, 0-10 VDC or 2-10 VDC, all set via DIP switches located on the board. The D36 is compatible with a Pressure Differential Switch, and now includes the option of the Electronic Air Flow Sensor, the preferred option for low air flow applications. Other features include an output to a fan relay and a self test diagnostic mode to improve troubleshooting.

All engineered in a versatile compact design.

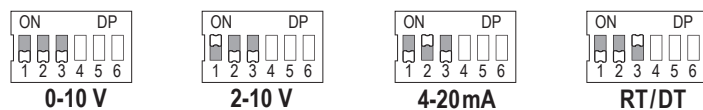
## TYPICAL WIRING DIAGRAM:



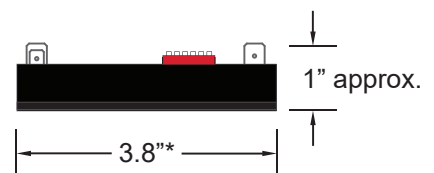
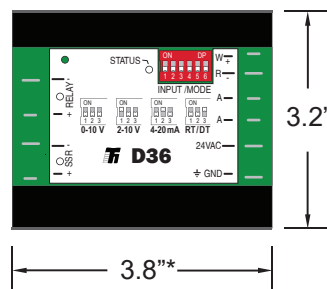
## FEATURES:

- choice of four types of input on a single board selected by DIP switch
  - Thermistor (RT/DT)
  - 0 - 10 VDC
  - 4 - 20 mA
  - 2 - 10 VDC
- Powered by 24VAC
- Output to a fan relay
- Generator-compatible selection
- Compatible with the Electronic Air Flow Sensor
- Primary single DC output to modulate up to 8 SSR relays
- Secondary DC output for second stage controls

## INPUT/MODE:



## DIMENSIONS:



\* dimensions are approximate and may change without notice

**THERMOLEC**